

ADDENDUM NO. 1

2017 Baxter Lane Improvements Project Bozeman, Montana

Date of Addendum: August 1, 2017
Bid Opening Date: August 15, 2017 at 2:00 p.m.

This addendum modifies the Contract Documents and Construction Drawings for the 2017 Baxter Lane Improvements Project from Cottonwood to Ferguson in Bozeman, Montana, as set forth herein:

1. BID PROPOSAL:

Add bid item #48. Temporary Pavement Markings per 1 Lump Sum. See plan sheet S-1 for quantities. Use waterborne paint per MPWSS Specifications.

2. SPECIAL PROVISIONS:

51. ELECTRICAL. Revise powder coat finish to a factory painted finish.

Modification: Section 51.A. Electrical work includes new corridor lighting with ~~powder coating~~ factory painted “Hunter Green” luminaires along Baxter Lane.

Modification: Section 51.C.9. Replace powder coat with painted. Revise title to “35’ Painted Luminaires with Cobra LED Assembly”.

Modification: Section 51.C.9.a. General. Revise to “Furnish galvanized steel luminaire standards factory painted ~~powder coated~~ “Hunter Green”,”

Modification: Section 51.C.9. Revise the sentence on page 34 to “Luminaires shall be painted ~~powder coat finished~~ Hunter Green”.

Modification: Section 51.C.10. Revise the first sentence to “All poles, mast arms, and luminaires for street lights and signal poles shall be round, tapered steel with galvanized, or galvanized and painted ~~powder coat finish of~~ Hunter Green.”

Modification: Remove Section 51.C.12. Powder Coat Finish.

Replace Section 51.C.12 with the following: All poles, mast arms, and luminaires for street lights shall be round, tapered steel, galvanized and painted finish. Painted finish shall be “Hunter Green” (RAL #6005).

Modification: Remove Section 51.C.1.b. Concrete Foundation Pads.

53. MEASUREMENT AND PAYMENT

Modification: 53.44. Revise sentence: “~~Powder coating~~ Factory painted finish as shown on the plans.”

Add the following section:

53.48 Temporary Pavement Markings. This item includes furnishing and installing waterborne paint per MPWSS Specifications including lane lines, words, and symbols. Provide all labor, tools, equipment, materials, and incidentals necessary to complete the work including surface preparation and removal as necessary. Measurement is per one lump sum. Payment is at the unit bid price per lump sum of pavement markings installed and accepted.

3. CONSTRUCTION DRAWINGS:

The following changes shall be made to the Construction Drawings:

Sheet W-1 & W-2:

Modification: In the profile view, remove “FLOWABLE FILL” trench backfill call out along the longitudinal length of the water main.

Sheet S-8:

Modification: Revise the crosswalk at Andalusian Avenue from a Type A Crossing to a Type B Crossing with a yield line per C.O.B. Standard Drawings 02581-1 and 02581-2, using white thermoplastic.

Sheet S-1:

Modification: Revise the quantity of 8” Thermoplastic from 334 feet to 132 feet. Revise the quantity of White Thermoplastic Words & Symbols from 573 square feet to 995 square feet.

Add the following: Add “TEMPORARY PAVEMENT MARKINGS” bid item per lump sum. The bid item is for waterborne paint during winter shutdown, if necessary, per MPWSS specifications. It includes centerline, median lines, turn lane lines, and turn lane symbols. It does not include bike lanes, bike symbols, crosswalks, and median hatching. The bid item is based on 7,210 linear feet of 4” Yellow Paint, 840 linear feet of 8” White Paint, and 375 square feet of White Paint Words and Symbols.

Sheet E-1:

Modification: Revise the bid item in the summary frame to “LUMINAIRE ASSEMBLY (145W COBRA LED, PAINTED ~~WITH POWDER COAT~~)”

Sheet E-3:

Replace the detail for “BREAK AWAY TRANSFORMER BASE” with the attached City of Bozeman Standard Drawing “FIGURE 16, TYPICAL FRANGIBLE TYPE TRANSFORMER BASE DETAIL”.

Replace Note 2 under ROADWAY LUMINAIRE detail to “Factory paint the luminaire assembly, pole, base, and mast arm Hunter Green”.

4. ADDITIONAL QUESTIONS:

Sheet E-1, can the pull box covers be labeled “ELECTRIC” instead of as described in note 2? No, pull box covers are per Note 2. Note 2 is based on Figure 2 in the new City of Bozeman Standard Specifications for Lighting Materials and Installation dated March 11, 2017.

Is the Concrete Foundation Pad/Cabinet needed as described in Special Provision 51.C.1.b? No, see sheet E-2 for the standard City of Bozeman standard cabinet mounted on galvanized supports.

Is the bending, pull tape, and tracer requirements correct as described in Page 31 and 32 of the Special Provisions? Yes, these requirements are in the new City of Bozeman Standard Specifications for Lighting Materials and Installation dated March 11, 2017.

Can Baxter Lane be shut down for construction? Is there any time limit? Yes, the City will allow a closure of Baxter Lane with approval of detours for the duration of the project, except during winter shutdown. Winter shutdown requires two-way traffic and asphalt surfacing per Special Provision #16.

5. ATTACHMENT:

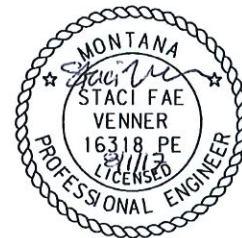
Figure 16 Typical Frangible Type Transformer Base Detail

END OF ADDENDUM NO. 1

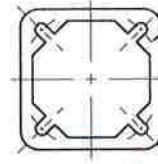
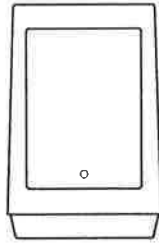
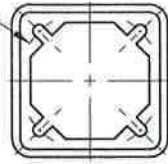
Issued By: ROBERT PECCIA & ASSOCIATES
3810 Valley Commons Drive Suite 4, Bozeman, Montana 59718



Staci Venner, P.E., Project Manager
Office: (406)-284-2665



BOLT CIRCLE SHALL MATCH FOUNDATION



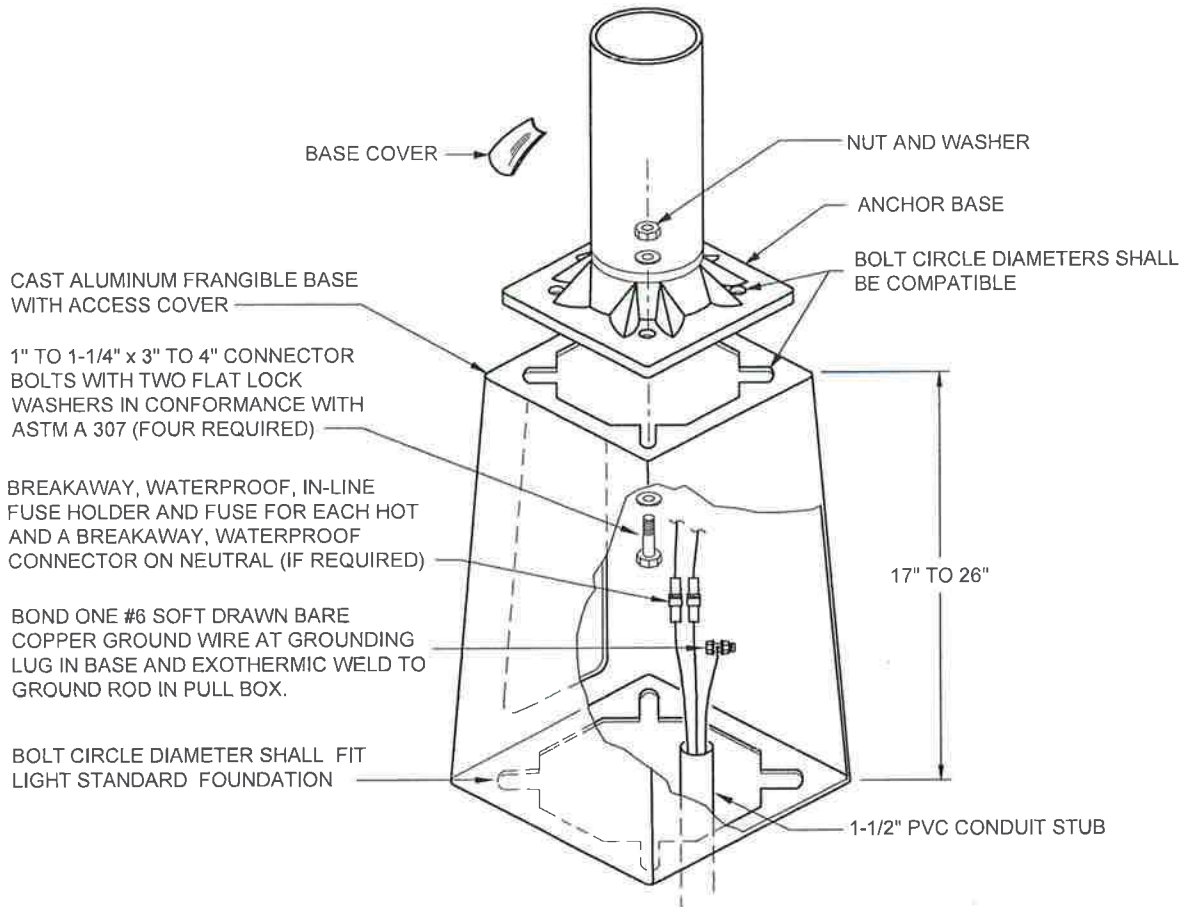
BOLT CIRCLE SHALL MATCH LIGHT STANDARD BASE

BOTTOM PLATE

FRONT VIEW

TOP PLATE

NOTE: MATCH EXISTING BREAKAWAY TRANSFORMER BASE AS CLOSELY AS POSSIBLE.



NOTES

1. ALL BREAK-AWAY TRANSFORMER BASES SHALL CONFORM TO AASHTO "STANDARD SPECIFICATIONS FOR STRUCTURAL SUPPORTS FOR HIGHWAY SIGNS, LUMINAIRES AND TRAFFIC SIGNALS".
2. LIGHT STANDARD FOUNDATIONS MAY BE PRECAST CONCRETE OR CAST-IN-PLACE CONCRETE.
3. ALL CONDUCTORS SHALL BE SIZED IN CONFORMANCE WITH N.E.C. REQUIREMENTS IMSA 19-1 3 CONDUCTOR #14 AWG MINIMUM.
4. HAND HOLE IS NOT REQUIRED IN THE POLE IF A BREAKAWAY TRANSFORMER BASE IS USED.

CITY OF BOZEMAN STANDARD DRAWING	Date: 2016-08-05	TYPICAL FRANGIBLE TYPE TRANSFORMER BASE DETAIL	FIGURE 16
	Scale: N.T.S.		